



BRAUN

BRAUN Scouting Cam BLACK300phone



BRAUN Photo Technik GmbH, Merkurstr.8, 72184 Eutingen, Germany

www.braun-phototechnik.de

Fon+49 / 911 / 3206-0

Fax: +49 / 911 / 3206-129

1.	Introduction.....	3
1.1	Application.....	3
1.2	Power Supply.....	3
1.3	Caution.....	3
1.4	Key Features.....	3
2.	Camera Overview.....	5
2.1	Front View.....	5
2.2	Side View (Right).....	5
2.3	Rear View.....	6
2.4	Bottom View.....	6
2.5	Remote Control.....	7
2.6	Screen Information Display.....	8
2.7	Settings Menu.....	8
3.	Quick Operation.....	9
3.1	Inserting Batteries.....	9
3.2	Inserting TF and SIM Cards.....	9
3.3	Powering On.....	10
3.3.1.	TEST.....	10
3.3.2.	ON.....	10
3.4	Menu Settings.....	10
3.4.1.	Photo Menu Settings.....	10
3.4.2.	Video Menu.....	11
3.4.3.	System Menu.....	13
3.4.4.	MMS Menu.....	16
3.4.5.	SMTP Menu.....	17
4.	MMSCONFIG Setting.....	18
5.	SMS Control.....	22
6.	Firmware Upgrade.....	22
7.	Specifications.....	23
8.	Packing List.....	24

BRAUN Photo Technik GmbH, Merkurstr.8, 72184 Eutingen, Germany

www.braun-phototechnik.de

Fon+49 / 911 / 3206-0 Fax: +49 / 911 / 3206-129

1. Introduction

Thank you for choosing one of our highly qualified GSM Scouting Trail Camera. This 12MP HD digital camera was developed in-house based on feedback and requirements from global customers.

1.1 Application

This digital camera, with its camouflage appearance, is ideal for home security, warehouse surveillance and particularly monitoring wild animals. It is easy to install and can be used to capture photos manually or long-term videos.

- Surveillance camera for home, office, construction site, warehouse, etc.
- Motion-triggered infrared night vision
- Animal observation

1.2 Power Supply

AA Alkaline Batteries

This camera can either work with 4 or 8 AA alkaline batteries.

Please note that the voltage of rechargeable AA batteries (1.2V) is insufficient to power this device. Batteries should be inserted as indicated inside the battery case.

Solar Panel

For best user experience, this camera can work with most standard 6V lithium batteries charged by solar panels. We strongly recommend the original solar panel.

Power Adapter

This camera can also be powered by an external 6VDC adapter. Remove the alkaline batteries when using the power adapter.

1.3 Caution

- Insert the TF card with the power switch in OFF position.
- Do not insert or remove the TF card with the power switch in ON position.
- Format the TF card in the camera when first used.
- The camera is in USB mode when connected to a USB port of your computer. In this case, the TF card is displayed as removable disk.
- Ensure sufficient power when upgrading the firmware; otherwise malfunctions are possible.

1.4 Key Features

1	Built-in 2.0" TFT color screen to review photos and videos on camera
2	36 IR LEDs with range of 20 meters

BRAUN Photo Technik GmbH, Merkurstr.8, 72184 Eutingen, Germany

www.braun-phototechnik.de

Fon+49 / 911 / 3206-0 Fax: +49 / 911 / 3206-129

3	Programmable 5/8/12 megapixel high-definition resolution
4	Color images during the day; black and white at night
5	Quick trigger time: 1.1s
6	Multi-shot photos: 1, 3, 6, 9
7	Adjustable delay between recordings: 1/5/10/30 seconds/minutes
8	Adjustable video length: 10/30/60/90 seconds
9	With 8 AA alkaline batteries max. standby time 6 months
10	Operating temperature: -30°C to 70°C
12	Timer for camera to work only during preset time period per day
13	Date stamp with time, temperature and moon phase
14	Sound recording
15	Supports 2G SIM cards for real-time photos
16	MMS/SMTP function to transmit photos to 1-4 preset mobile phones or emails
17	SMS to enable camera to capture/send photo, switch on/off, get number of captured images and battery status

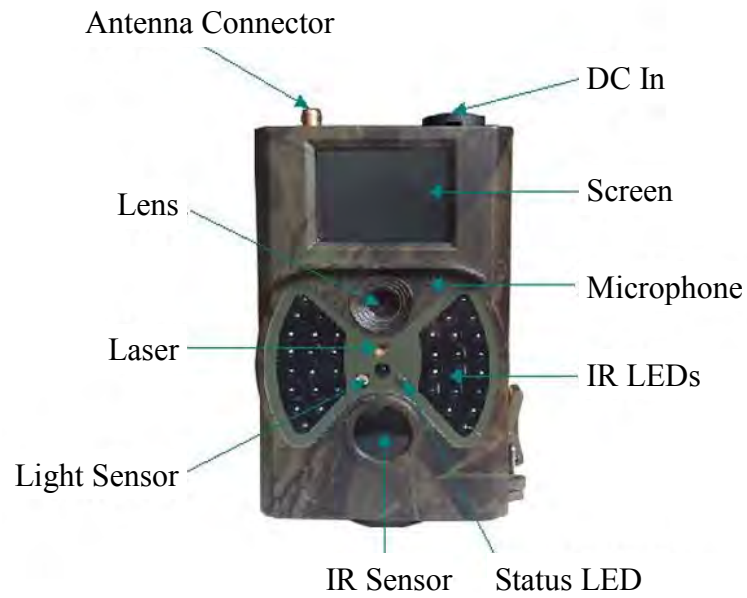
BRAUN Photo Technik GmbH, Merkurstr.8, 72184 Eutingen, Germany

www.braun-phototechnik.de

Fon+49 / 911 / 3206-0 Fax: +49 / 911 / 3206-129

2. Camera Overview

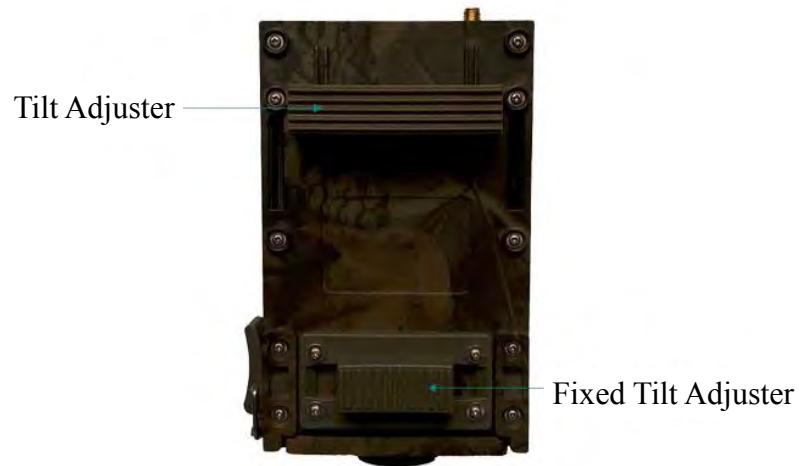
2.1 Front View



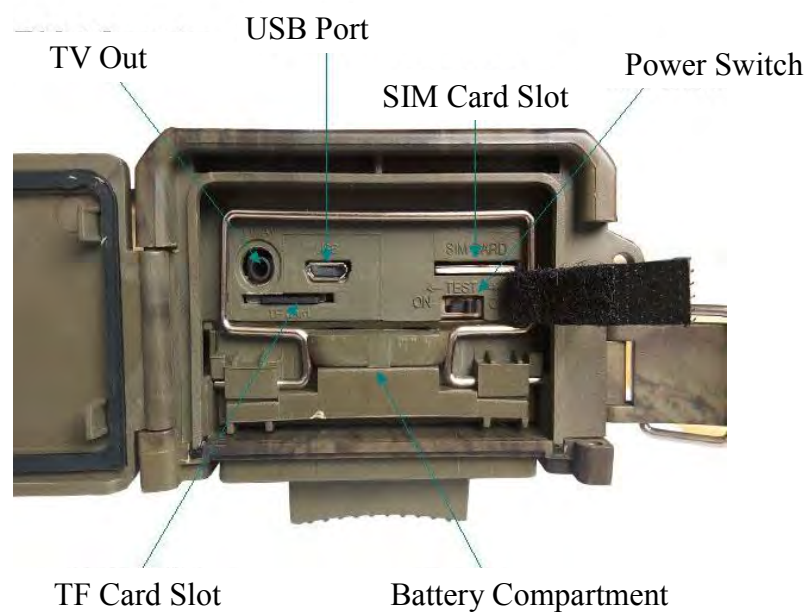
2.2 Side View (Right)



2.3 Rear View



2.4 Bottom View

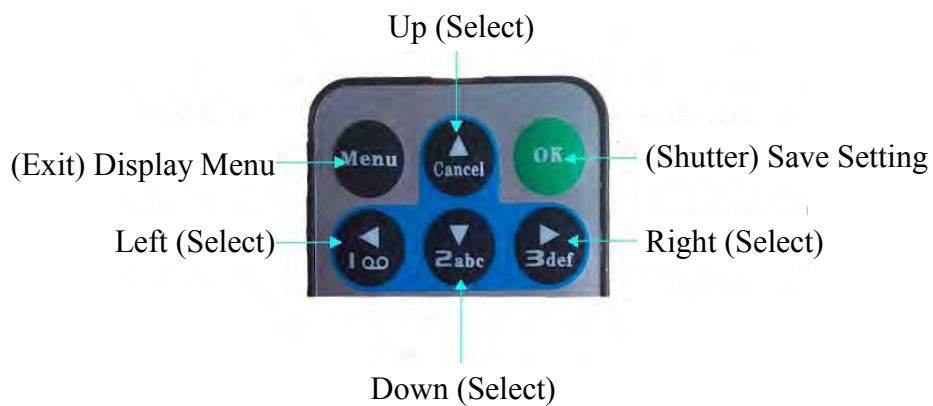


2.5 Remote Control

The infrared remote control is primarily used to customize settings. The maximum range is 9 meters.



Note: Press * for laser pointer.



Note:

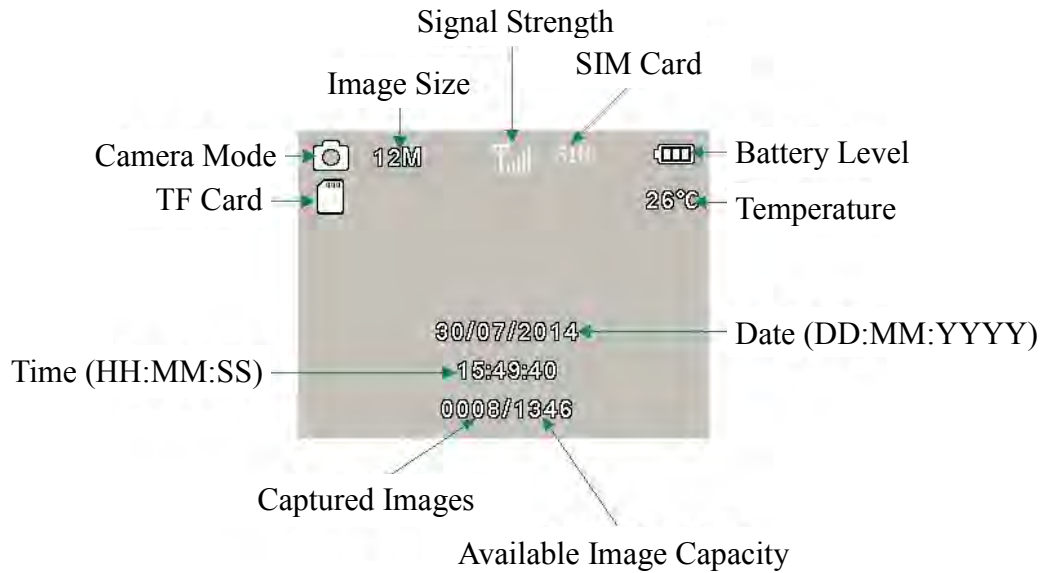
1. Press OK to capture a photo or start video recording.
2. Press Right to preview photo or video recording.
3. Press Up or Down to view photos.
4. Press Left to start video preview, press again to stop video preview.

BRAUN Photo Technik GmbH, Merkurstr.8, 72184 Eutingen, Germany

www.braun-phototechnik.de

Fon+49 / 911 / 3206-0 Fax: +49 / 911 / 3206-129

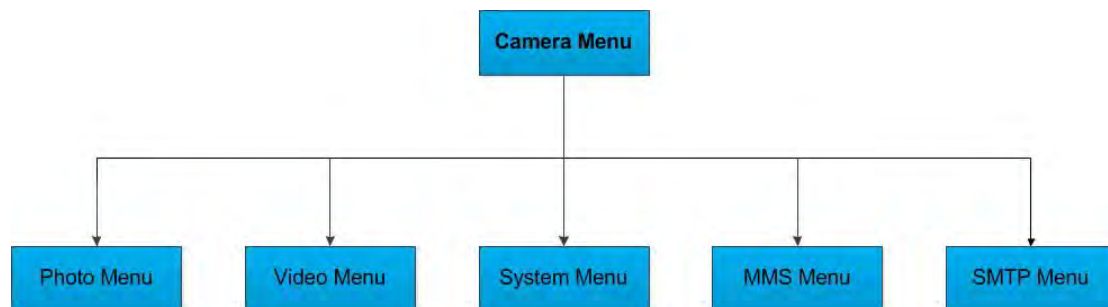
2.6 Screen Information Display



Note: To activate MMS or SMTP functions, the camera must find a signal and SIM card must be inserted.

2.7 Settings Menu

The camera has five main menus:



BRAUN Photo Technik GmbH, Merkurstr.8, 72184 Eutingen, Germany

www.braun-phototechnik.de

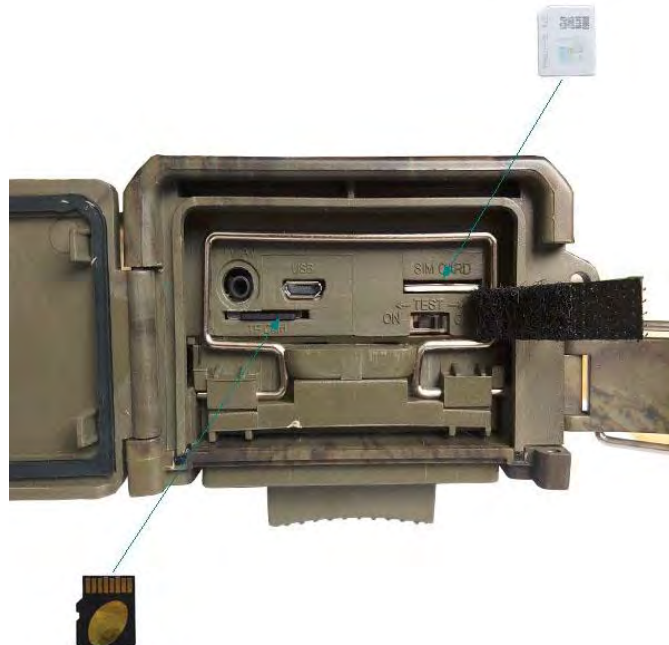
Fon+49 / 911 / 3206-0 Fax: +49 / 911 / 3206-129

3. Quick Operation

3.1 Inserting Batteries



3.2 Inserting TF and SIM Cards



Note: To activate the MMS or SMTP functions, save settings file Parameter.dat under MMSCONFIG to TF card.

3.3 Powering On



To power the camera on, slide the Power switch to TEST or ON position.

3.3.1. TEST

In TEST mode the screen lights up. The following operations are available via remote control:

- Settings in Camera Menu, including Photo, Video and System Menus
- Capturing photo or video
- Viewing photos or videos

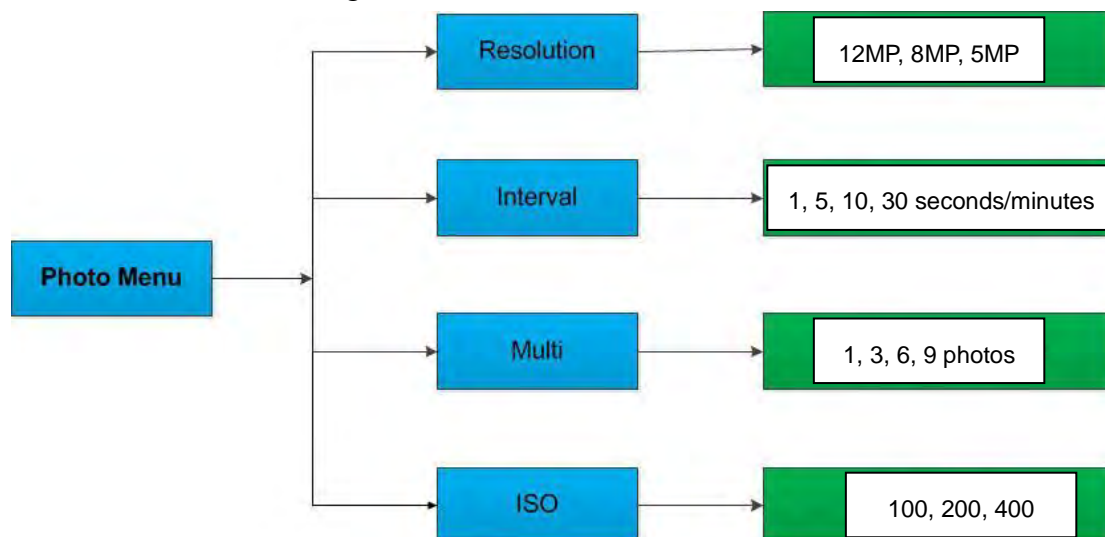
3.3.2. ON

In ON mode, the screen is dark, the camera works automatically.

3.4 Menu Settings

Settings in Photo, Video and System Menus can be adjusted by remote control; settings in MMS and SMTP Menus can only be adjusted by MMSCONFIG software on the CD.

3.4.1. Photo Menu Settings



Description:

Submenu	Content	Description
Resolution	12MP, 8MP, 5MP	Photo size
Interval	1/5/10/30 s/min	Waiting time to next capture
Multi	1/3/6/9	Number of photos captured in succession

BRAUN Photo Technik GmbH, Merkurstr.8, 72184 Eutingen, Germany

www.braun-phototechnik.de

Fon+49 / 911 / 3206-0 Fax: +49 / 911 / 3206-129

ISO	100, 200, 400	Camera exposure level
-----	---------------	-----------------------

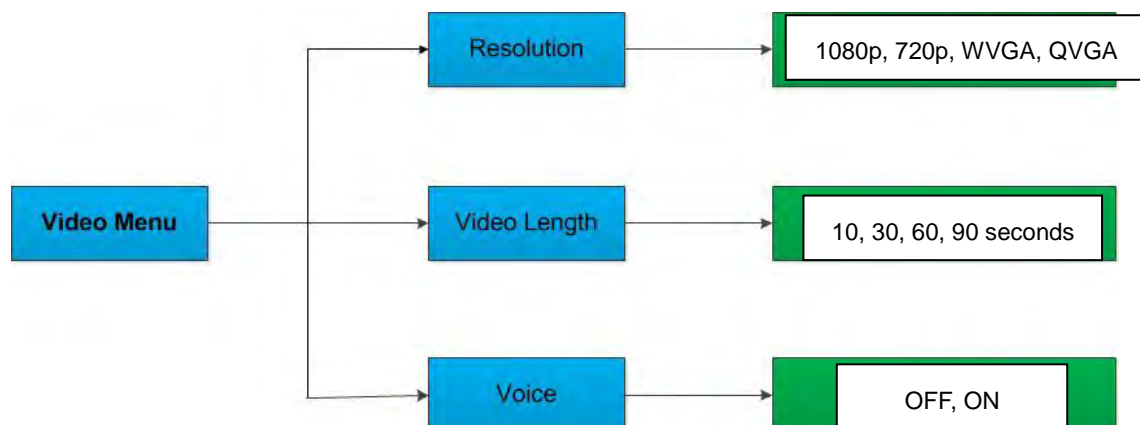
To change Resolution from 12MP to 5MP press the following buttons on the remote control:



Note:

1. Mode is Camera or Camera&Video.
2. Interval, Multi and ISO settings follow the same pattern.

3.4.2. Video Menu



Submenu	Content	Description
---------	---------	-------------

BRAUN Photo Technik GmbH, Merkurstr.8, 72184 Eutingen, Germany

www.braun-phototechnik.de

Fon+49 / 911 / 3206-0 Fax: +49 / 911 / 3206-129

Resolution	1080p, 720p, WVGA, QVGA	Video size
Video Length	10s, 30s, 60s, 90s	Length of the video in seconds
Voice	On, Off	If On, video sound is recorded

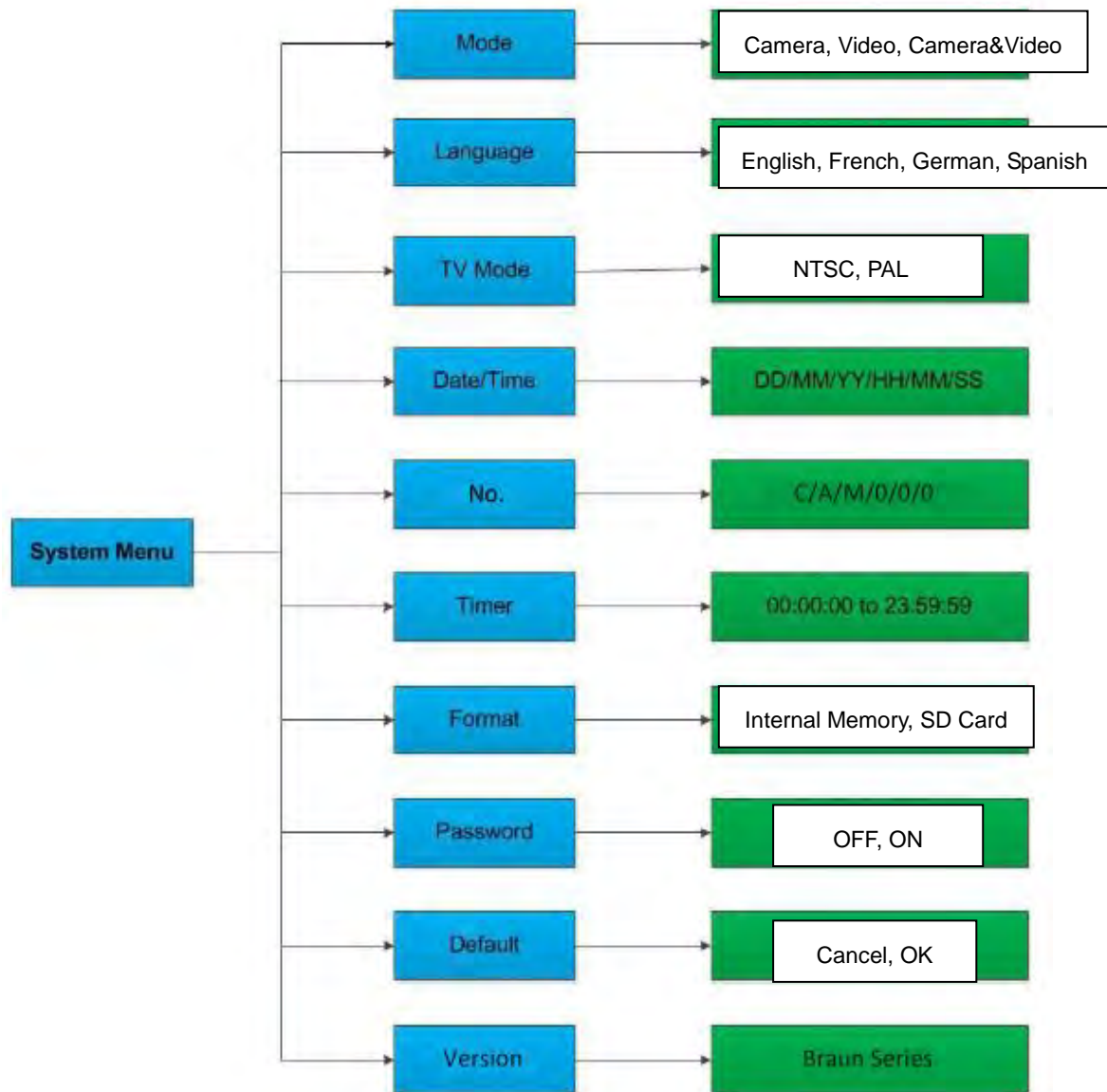
To change Resolution from 1080p to 720p press the following buttons on the remote control:



Note:

1. Mode is Video.
2. Video Length and Voice settings follow the same pattern.

3.4.3. System Menu



Submenu	Content	Description
Mode	Camera, Video, Camera&Video	Capturing photo, video, photo and video
Language	English, French, German, Spanish	Camera menu language
TV Mode	NTSC, PAL	TV playback mode
Date/Time	31-07-2014 15:49:40	Date-Month-Year Hour:Minute:Second
Password	ON, OFF	Password protection
Password	****	If ON, 4 digits

BRAUN Photo Technik GmbH, Merkurstr.8, 72184 Eutingen, Germany

www.braun-phototechnik.de

Fon+49 / 911 / 3206-0 Fax: +49 / 911 / 3206-129

Timer	On, Off	If On, camera only works in specified period
-------	---------	--


To change Mode from Camera to Video press the following buttons on the remote control:



Note:

1. Language, Distance, TV Mode, Format and Default settings follow the same pattern.
2. For Date/Time, Timer and Password settings:

Press  or  to select the value.

Press  to enter the next submenu.

3. After selecting Default, the setting is:

Setting	Default	Items
Mode	Camera	Camera, Video, Camera&Video
Resolution (Camera)	12M	12M, 8M, 5M
Delay	1 second	1-30 seconds, 1-30 minutes
Multi	Single	Single, 3, 6, 9 Pictures

BRAUN Photo Technik GmbH, Merkurstr.8, 72184 Eutingen, Germany

www.braun-phototechnik.de

Fon+49 / 911 / 3206-0

Fax: +49 / 911 / 3206-129

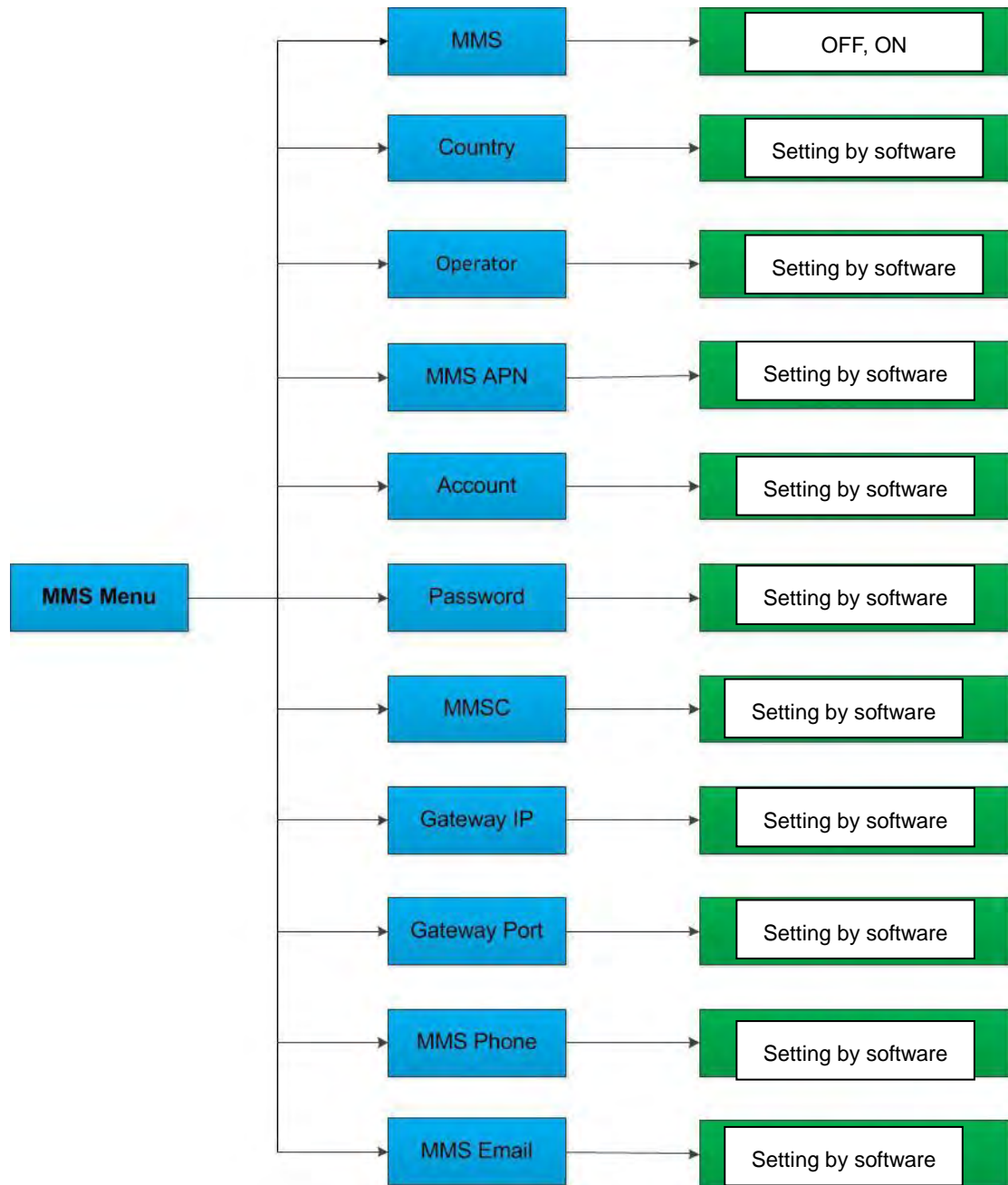
ISO	400	100, 200, 400
Resolution (Video)	1080p	1080p, 720p, WVGA, QVGA
Video Length	10s	10s, 30s, 60s, 90s
Date/Time	Same as last time	YY/MM/DD, MM/DD/YY, DD/MM/YY Adjust
Language	English	English, French, German, Spanish, Russian
Timer	00:00:00 to 23:59:59	Adjust
Format	Internal Memory	Internal Memory, SD Card
TV Mode	NTSC	NTSC, PAL
Password	Off	Off, On

BRAUN Photo Technik GmbH, Merkurstr.8, 72184 Eutingen, Germany

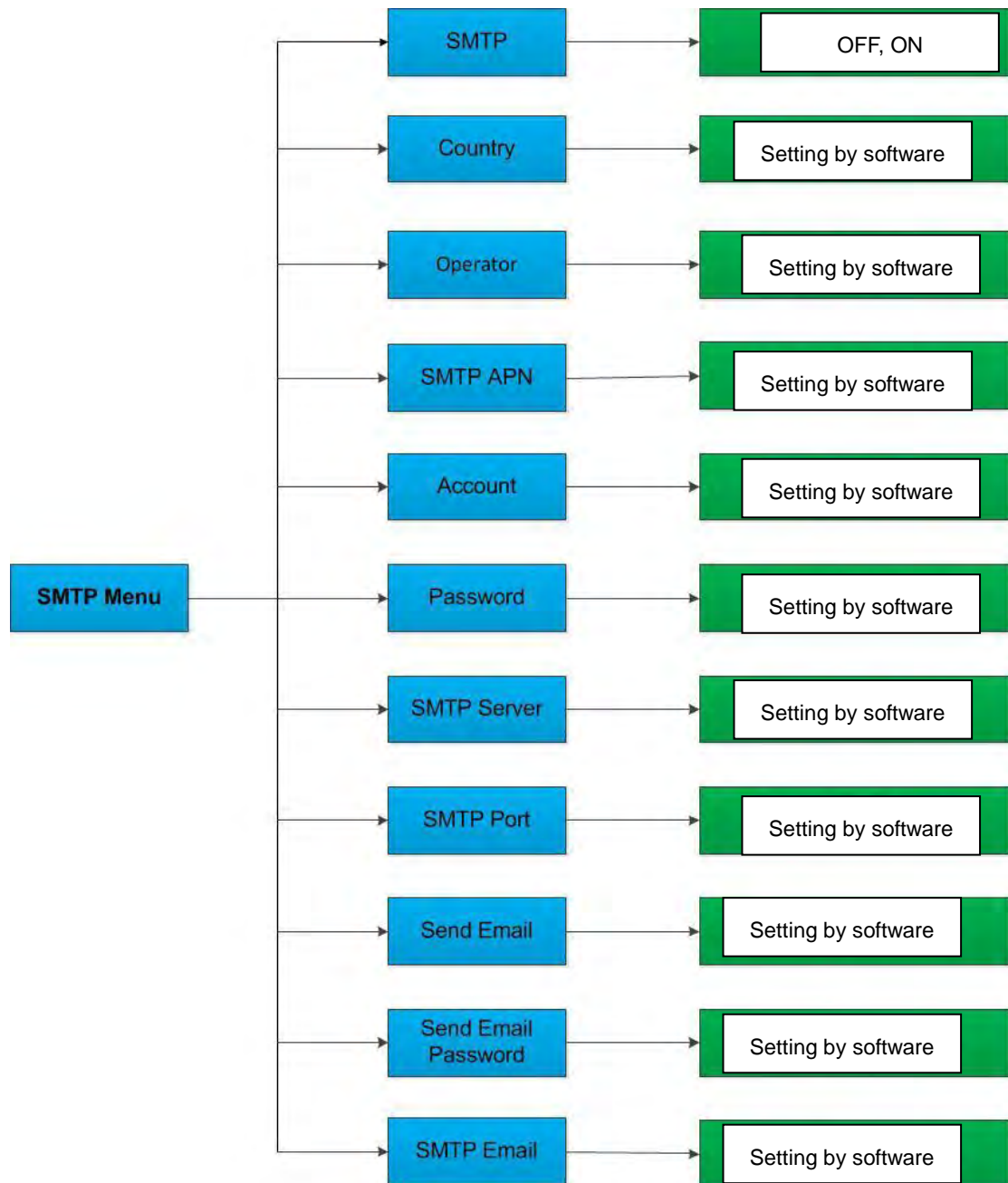
www.braun-phototechnik.de

Fon+49 / 911 / 3206-0 Fax: +49 / 911 / 3206-129

3.4.4. MMS Menu



3.4.5. SMTP Menu



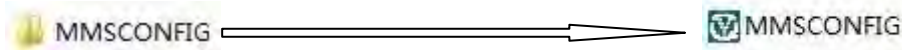
BRAUN Photo Technik GmbH, Merkurstr.8, 72184 Eutingen, Germany

www.braun-phototechnik.de

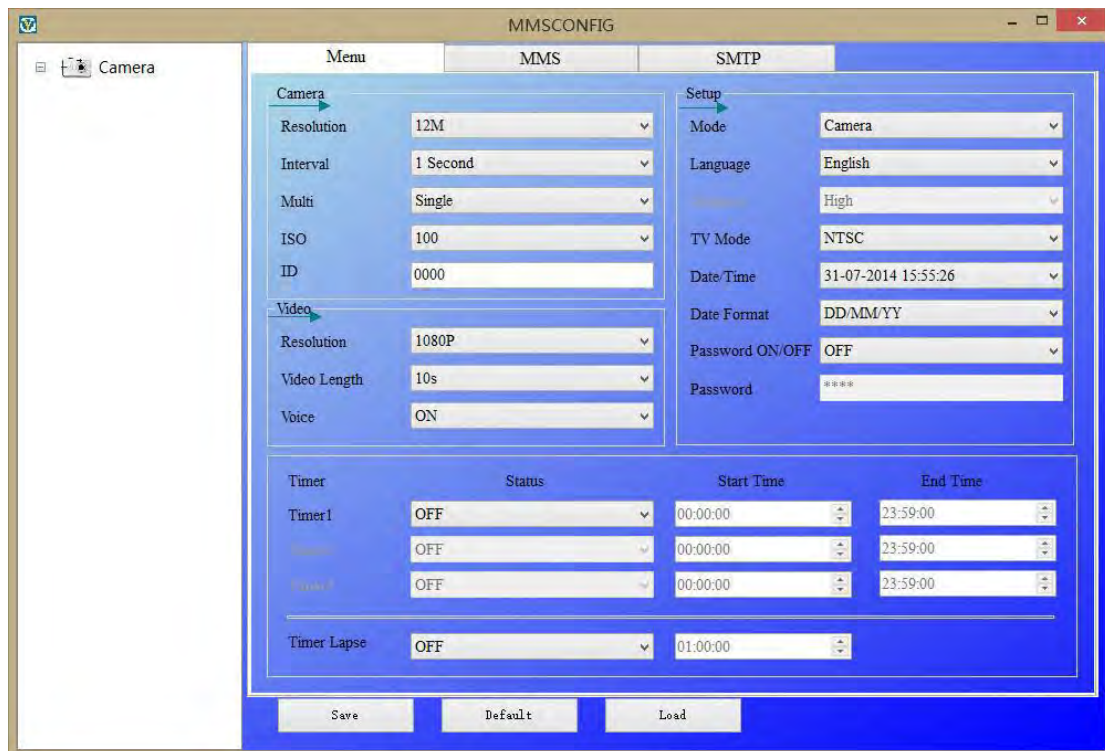
Fon+49 / 911 / 3206-0 Fax: +49 / 911 / 3206-129

4. MMSCONFIG Setting

1. Load the CD in the computer.
2. Run MMSCONFIG.exe file from MMSCONFIG folder.



3. Adjust Camera, Video and System Menu settings.



Note: After adjusting the settings with the remote control they can be skipped.

4. Adjust MMS Setting

A. MMS Mode: Auto

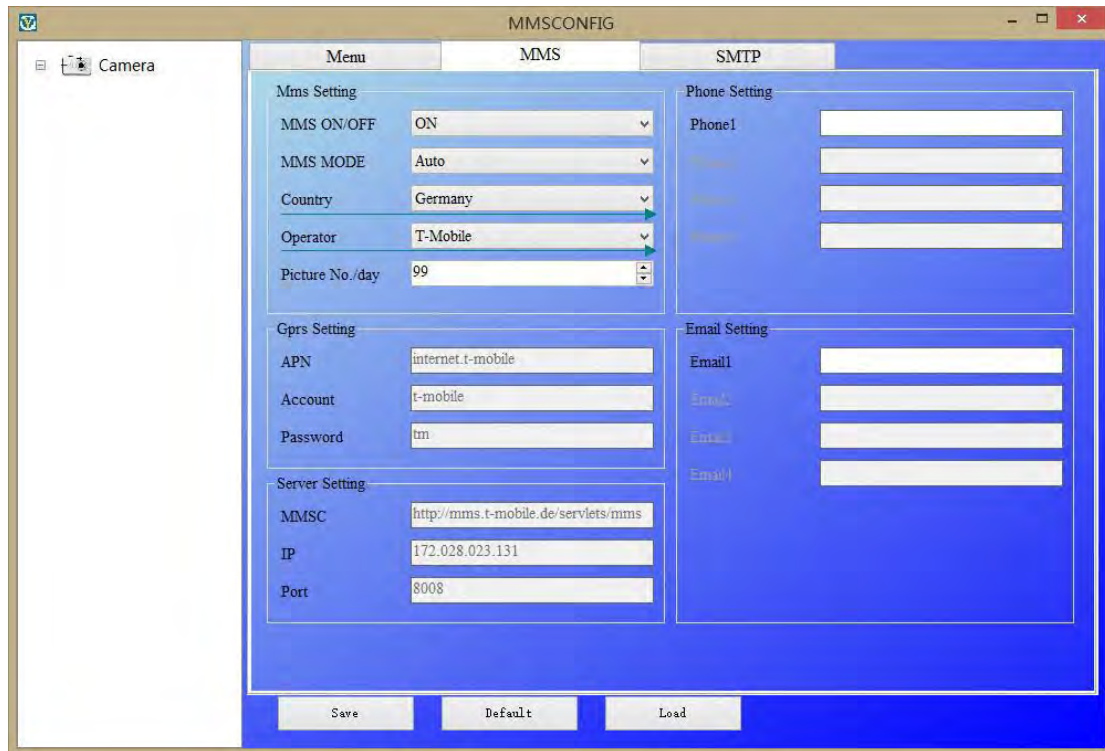
In Auto MMS Mode, select:

- Country
- Operator
- Add phone numbers for receiving photos
- Add email addresses for receiving photos

BRAUN Photo Technik GmbH, Merkurstr.8, 72184 Eutingen, Germany

www.braun-phototechnik.de

Fon+49 / 911 / 3206-0 Fax: +49 / 911 / 3206-129



B. MMS Mode: Manual

If there is no configured information to select, select Manual MMS Mode.

Contact SIM card provider to obtain APN, Account, Password, MMSC, IP and Port information; then

- Add phone number for receiving photos
- Add email address for receiving photos

5. Adjust SMTP Setting

Sending images to email accounts.

A. SMTP Mode: Auto

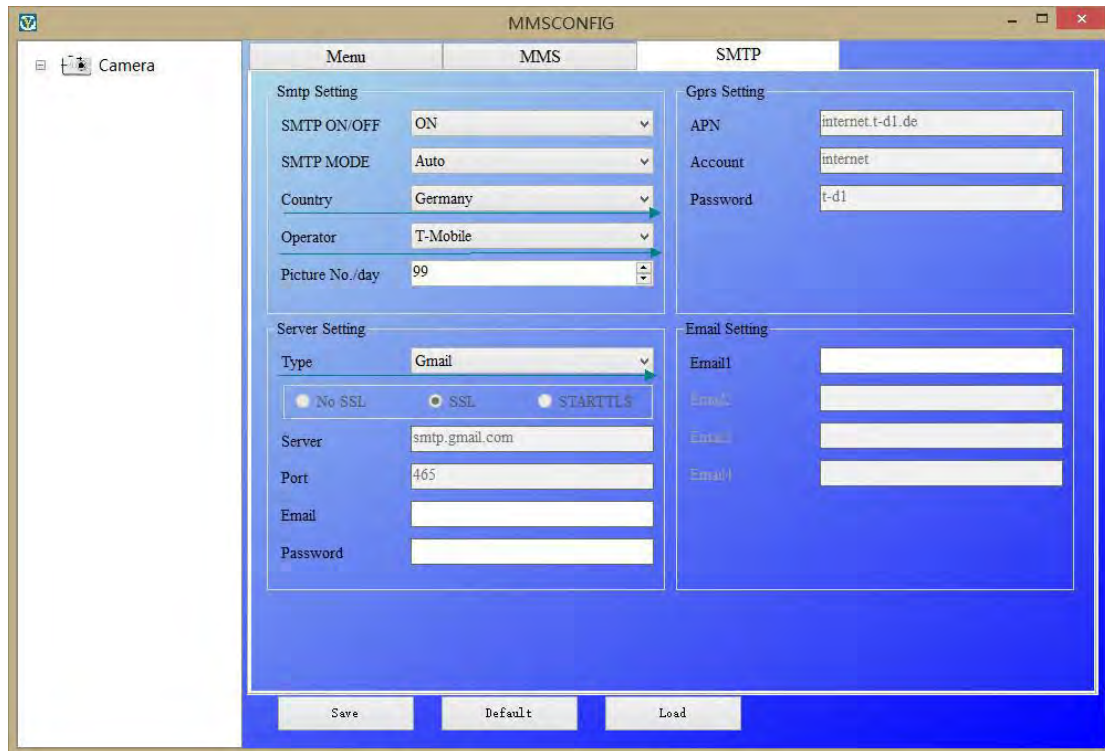
In Auto SMTP Mode, select:

- Country
- Operator
- Type of email
- Add sender email address on the left
- Add sender email address password on the left
- Add receiver email addresses on the right

BRAUN Photo Technik GmbH, Merkurstr.8, 72184 Eutingen, Germany

www.braun-phototechnik.de

Fon+49 / 911 / 3206-0 Fax: +49 / 911 / 3206-129



B. SMTP Mode: Manual

If there is no configured information to select, select Manual SMTP Mode.

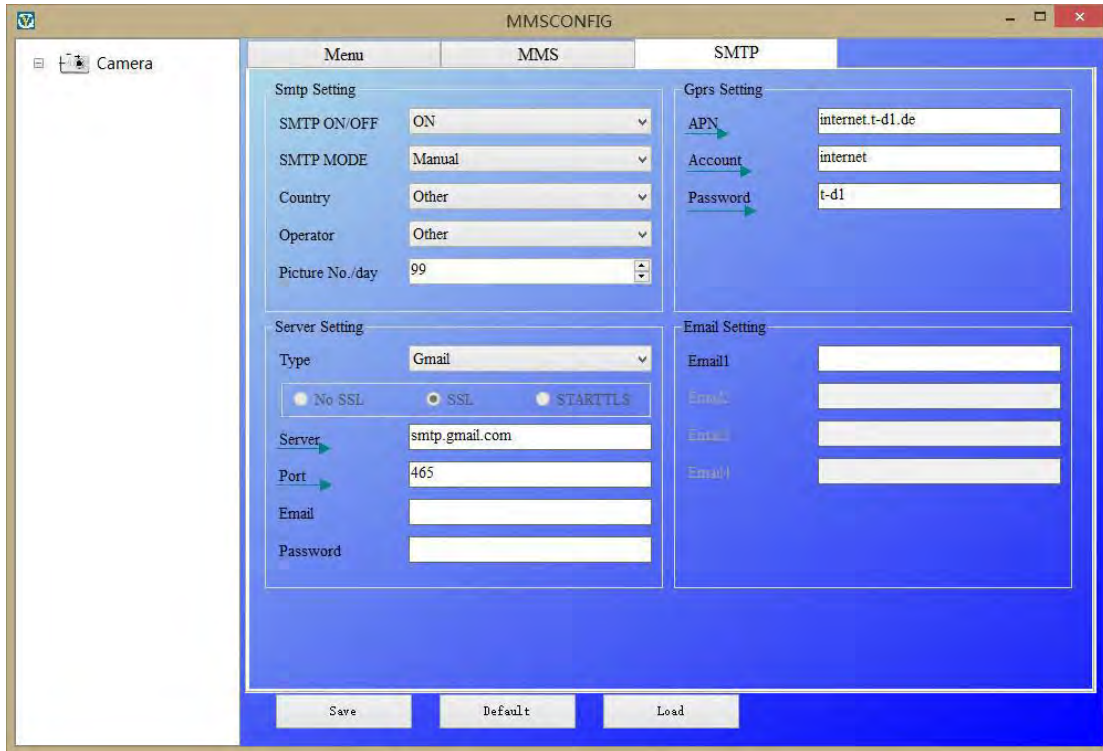
Contact SIM card provider to obtain APN, Account, Password information; contact sender email provider to obtain Server, Port information.

- Add sender email address on the left
- Add sender email address password on the left
- Add receiver email addresses on the right

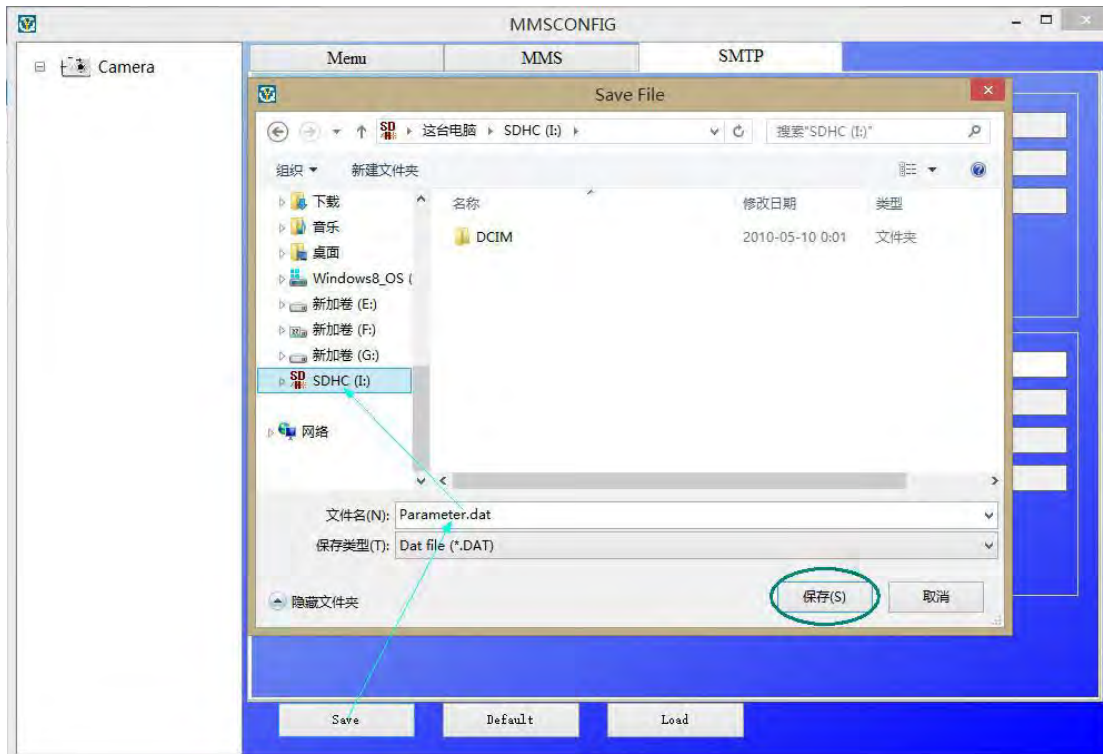
BRAUN Photo Technik GmbH, Merkurstr.8, 72184 Eutingen, Germany

www.braun-phototechnik.de

Fon+49 / 911 / 3206-0 Fax: +49 / 911 / 3206-129



6. Save Parameter.dat to TF card.



5. SMS Control

There are two ways to control the camera by sending SMS:

1. Send SMS code, or
2. Install phone app and select function command.

The SMS codes are:

Code	Function	Description
530	Camera Start	Start Working
531	Camera Sleep	Stop Working
500	Capture	Camera captures a photo and sends it to the configured phone or email
505	Capture and get pic (MMS mode)	Camera captures a photo and sends it to the current phone
520	Get Pic information	Camera sends a text with number of photos, SD card capacity, battery level

6. Firmware Upgrade

This camera is equipped with an automatic upgrade function. Upgrade is only necessary if improved firmware is available. Follow the steps below:

1. Unzip the upgrade file.
2. Copy file FWF900.bin to TF card.
3. Insert the TF card in the camera.
4. Power on the camera (in Test Mode).
5. The camera will read the TF card and update automatically. During upgrade process the screen is black.
6. The screen will light up after successful upgrade.
7. Remove the TF card and insert in PC. Delete file FWF900.bin on TF card (otherwise the camera will enter upgrade mode when powered on again).
8. Insert the TF card in the camera.

BRAUN Photo Technik GmbH, Merkurstr.8, 72184 Eutingen, Germany

www.braun-phototechnik.de

Fon+49 / 911 / 3206-0 Fax: +49 / 911 / 3206-129

7. Specifications

Image Sensor	5 megapixels color CMOS
Memory	TF Card up to 32GB
Lens	F=3.1; FOV=60°
Size	145mm * 80mm * 55 mm
IR Filter	Fully automatic IR filter
TFT Display Screen	2.0"
IR LEDs	Black invisible 940nm
PIR Sensor Sight Angle	60°
PIR Sensing Distance	20 meters
Number of IR LEDs	36 LEDs
Max Night Vision Range	20 meters
Trigger Speed	1.1 seconds
Trigger Interval	1/5/10/30 sec/min (default 1 sec)
Image Resolution	12MP/8MP/5MP
Multiple Photos per Detection	1/3/6/9
Video Resolution	1080p/720p/VGA
File Format	JPEG/AVI
Date Time Stamp	Yes
Moon Phase Stamp	Yes
Exposure	Auto
Password Security	4-digit PIN code
Frequency Bands	2G GSM 850/900/1800/1900 MHz
Remote Control	SMS
GPRS Transmission	Data transfer by email
MMS to Phone	1-4 phone numbers
MMS to Email	1-4 email addresses
Periodic Shot	1 second to 24 hours
Stand-By Current	0.2mA
Stand-By Time	6 months
Interface	TV out (NTSC/PAL), USB, SD card slot, 6VDC In
Fixing Method	Belt, Tripod
Operating Temperature	-30 to +70°C
Power Supply	8 × AA batteries
Camera Socket	Yes
Waterproof	IP54
Certifications	FCC, CE, RoHS

BRAUN Photo Technik GmbH, Merkurstr.8, 72184 Eutingen, Germany

www.braun-phototechnik.de

Fon+49 / 911 / 3206-0 Fax: +49 / 911 / 3206-129

8. Packing List



Digital Camera



Remote Control



Antenna



USB Cable



AV Cable



Strap



CD

BRAUN Photo Technik GmbH, Merkurstr.8, 72184 Eutingen, Germany

www.braun-phototechnik.de

Fon+49 / 911 / 3206-0

Fax: +49 / 911 / 3206-129